

ATFM Daily Plan - Monday 13 May 2024

ADP Version 1



Airport	Planned GDPs	Total Arr/Dep	Affected Flights	Total Ground Delay	Av. Ground Delay	36 Hr Synoptic Forecast
YSSY	YSSY GDP-A 2000-0300	891	134	4,022	30.00	
YMML	YMML GDP-A 2000-0100	676	57	848	15.00	
YBBN	NONE	618	n/a	0	0.00	
YPPH-A	YPPH GDP-A 0030-0600	481	80	1,199	15.00	
YPPH-D	YPPH GDP-D 2130-0030		102	851	8.30	
Totals		2666	373	6,920	16.54	

* denotes a revision has taken place

ATFM Daily Plan Summary Notes

YSSY	Nil significant risks identified at this time.
YMML	Nil significant risks identified at this time.
YBBN	ILS Runway 19L outage as per NOTAM, nil other significant network risks identified at this time.
YPPH	Risk of crosswinds during morning peak, nil other significant network risks identified at this time.
Other Significant	Refer NOTAM for latest estimated airborne traffic delay advice.
Change Summary:	[07:34pm] Version 1: Initial.

Teleconference Details
1800 062 923
Participant Code 7207 9651
Guest Code 3064#

NCC: 1800 020 626
atfmu@airservicesaustralia.com

CAP THREAT: 122145 - 122359 &
130730 - 130929

PRM: NOT REQ

YMEN SLOT SCHEME: NO

Issues expected to impact service delivery

Location	Issue/NOTAM Details
YSSY	C1453/24 RWY 0725 CLSD DUE WIP FM 05 121000 TO 05 161300 DAILY 1000-1300
YSSY	C1558/24 RWY 0725 CLSD DUE WIP FM 05 122100 TO 05 170700 DAILY 2100-0700
YMML	C546/24 RWY 0927 CLSD DUE WIP 05 150000 TO 05 150600
YBBN	C552/24 ILS 'IBS' 110.1 RWY 19L ON TEST, DO NOT USE FM 05 122200 TO 05 140600 DAILY 2200-0600

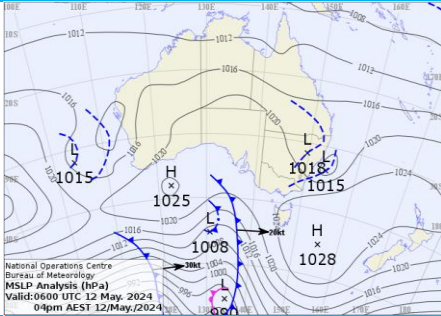
Network Weather Overview

From now to +72 hours

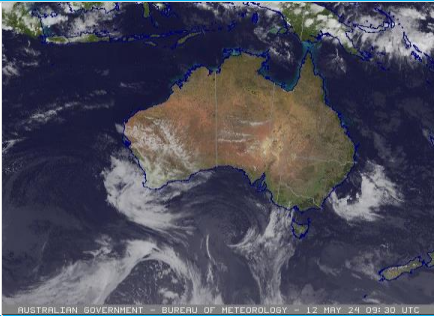
Monday 13 May 2024

Weather Overview

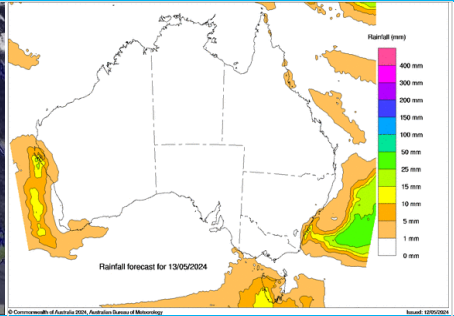
Mean Sea Level Pressure



Satellite Picture



Rainfall Outlook for tomorrow



Weather impact risk assessment Major Airports

	Brisbane	Melbourne	Perth	Sydney
AM Monday	CAVOK. Light SW'ly winds.	Slight chance early fog and mist/haze, becoming CAVOK mid-late morning. Light N to NW winds, tending W to SW late morning.	CAVOK. Moderate E to ENE winds. Winds aloft E to NE 25-35 knots, easing. Possible early turbulence/wind shear.	Showers. Cloud 1000-2500ft, lower in showers. Moderate S to SW winds, becoming gusty. Winds aloft S'ly 20-30 knots. Head winds.
PM Monday	CAVOK. Light W to SW winds.	Light showers developing late afternoon. Cloud 2500-3000ft developing late afternoon and lowering to 2000ft during the evening. Light to moderate S to SW winds.	CAVOK. Light to moderate ESE to ENE winds.	Showers easing. Cloud 2000-3000ft, lifting. Moderate SSW winds, gusty at times, easing.
AM Tuesday	Early fog inland. Patchy cloud 4000-5000ft. Light SSW winds tending SE from mid-morning.	Cloud 2500-3500ft, becoming patchy late morning. Light NW to SW winds.	CAVOK. Moderate E winds.	Light showers offshore. Likely CAVOK at the airport. Light W to NW winds, variable at times.
PM Tuesday	Likely CAVOK. Moderate SE winds.	Patchy cloud 3000-4000ft. Light S to SW winds, becoming variable in the evening.	CAVOK. Light N to NW winds, shifting moderate SW during the afternoon.	Light showers developing in the evening. Mostly CAVOK, then cloud 2000-2500ft developing late evening. Light S to SE winds.
AM Wednesday	Light showers offshore, moving ashore from late morning. Cloud 2500-4000ft. Light SSW winds, tending SE from late morning.	Chance of early fog, otherwise CAVOK. Light N to NW winds.	CAVOK. Light to moderate E winds.	Light showers offshore. Patchy cloud 1500-3000ft. Light NW to SW winds.
PM Wednesday	Light showers. Cloud 2500-4000ft, lowering 2000-2500ft in the evening. Light to moderate SE winds.	Cloud 3000-4000ft developing. Light SW to SE winds, becoming variable in the evening.	CAVOK. Light to moderate E to SE winds.	Patchy cloud 2500-3500ft, becoming CAVOK. Light NW to NE winds.

Significant other phenomena potentially affecting Australian FIRs

Volcanic Ash (VA) ≥ FL200	Nil current. For the latest information refer to http://www.bom.gov.au/aviation/volcanic-ash/darwin-va-advisory.shtml
Space Weather	The Bureau of Meteorology has observed a recent space weather event and assessed it to be Geomagnetic Storm G5 – Extreme planetary conditions, currently underway since 9:45am AEST on Saturday, 11 May 2024. Observed geomagnetic conditions within Australia are currently lowering to Geomagnetic Storm G1. Potential impacts include degradation of Global Navigation Satellite System (GNSS) positioning accuracy and availability, moderate to severe degradation or unavailability of HF communications, and Ground-based Augmentation Systems (GBAS) may be compromised. The Bureau is forecasting similar risk of further related events, until 6:00am AEST on Tuesday, 14 May 2024. For latest advisories refer to http://www.bom.gov.au/aviation/space-weather-advisories/
Tropical Cyclones	Nil current. For the latest information refer to http://www.bom.gov.au/cyclone/

Weather risk assessment provided by NCC Meteorological Unit – Bureau of Meteorology
Contact NCCMET for further detail or advice

Phone: 02 6268 4448
Email: nccmet@bom.gov.au

Detailed advice from major Airport MET CDM products available at Airservices NOC Portal, <https://www.airservicesaustralia.com/noc/>

SYDNEY - YSSY GDP-A 2000-0300

Monday 13 May 2024

ATFM-CDM Notes

METCDM Notes:

[1] 2000-0459: Slow moving low pressure system just to the east of the TMA is directing strong S'ly flow over the area. Cloud 1500-2500ft lifting during the day whilst, lowering 1000-2000ft in showers. Showers, possibly heavy at times over offshore areas easing. Slight risk of isolated offshore thunderstorms. S to SW winds increasing and becoming gusty during the morning and until mid-afternoon. There is risk of crosswinds if surface winds increase and tends more towards WSW (RWY 07/25 closed due WIP). 25-35 knots S'ly winds aloft. X-factor applied for strong headwinds on RWY 16 approach. There is slight risk of turbulence and wind shear during the initial hours of the METCDM if surface winds drops off further then indicated.

[2] 0300-1259: Showers contracting eastwards during the afternoon and into the evening. Cloud 2500-3500ft lower in showers. DVA rates indicated due to showers and cloud in the TMA however, with showers contracting offshore and away from approach path higher rates are also possible. Moderate S to SW winds.

NCC DLM Notes:

[Nil DLM Notes]

SM Notes:

[1] 0300-0459: Staffing

GDP Notes

Nil significant risks identified at this time.

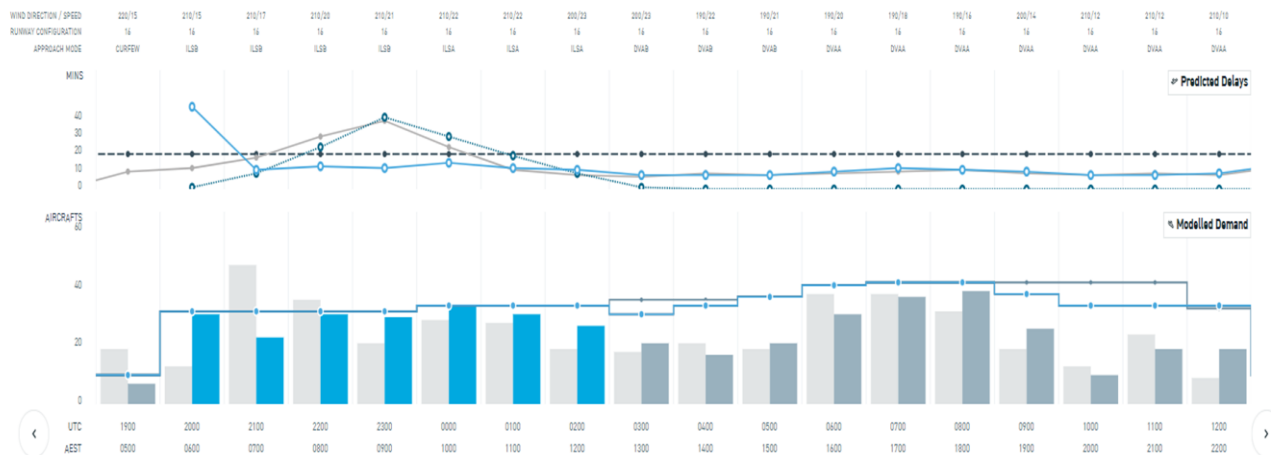
Tabulated Data

Time (Hour UTC)	122000	122100	122200	122300	130000	130100	130200	130300	130400	130500	130600	130700	130800	130900	131000	131100	131200	0
Runway Mode	16 ILSB	16 ILSB	16 ILSB	16 ILSB	16 ILSA	16 ILSA	16 ILSA	16 DVAB	16 DVAB	16 DVAB	16 DVAA	16 DVAA	16 DVAA	16 DVAA	16 DVAA	16 DVAA	16 DVAA	
Rate	32	32	32	32	34	34	34	31	34	37	41	42	42	38	34	34	33	

Segmentation and Notes

METCDM Notes	1	1	1	1	1	1	1	1&2	1&2	2	2	2	2	2	2	2	2	0
Segmentation	1	1	1	1	1	1	1	1	2	2	2	2	2	2	2	2	2	

Bar Graph



Legend

- ERSa airborne delay threshold
- Final CDM rate
- Ground delay (average)
- Current demand
- Initial airborne delay (90th PCTL)
- Modelled demand (no GDP)
- Latest airborne delay (90th PCTL)
- Modelled demand (GDP)
- Final MET rate
- Final SM rate

MELBOURNE - YMML GDP-A 2000-0100

Monday 13 May 2024

ATFM-CDM Notes

METCDM Notes:

[1] 2000-0259: N'y flow is expected ahead of an approaching front which is expected to slip far south of the TMA during the afternoon. Light to moderate N to NW winds turning through W and becoming WSW by midday. There is risk of mist/haze and shallow fog in the TMA thus, LAHSO is not indicated whilst, LAHSO is possible before 23Z if risk of mist/haze decreasing. LAHSO is been indicated past 23Z due to higher certainty of RWY 27/34 operations.

[2] 0100-1359: Cloud 2500-4000ft developing and lowering 2000-3000ft during the evening. Light showers in the far SW part of the TMA moving further into the TMA. X-factor applied for risk of showers reducing visibility and cloud ceiling on approach path during the afternoon/evening. Cloud 2500-4000ft developing and lowering 2000-3000ft during the evening. Light to moderate SW winds.

NCC DLM Notes:

[Nil DLM Notes]

SM Notes:

[Nil SMTM Notes]

GDP Notes

Nil significant risks identified at this time.

Tabulated Data

Time (Hour UTC)	122000	122100	122200	122300	130000	130100	130200	130300	130400	130500	130600	130700	130800	130900	131000	131100	131200	131300
Runway Mode	27 VMC	27 VMC	27 VMC	27/34 PRLAHS	27/34 PRLAHS	16/27 VMCA	16/27 VMCA	16/27 VMCA	16/27 VMCA	16/27 VMCA	16/27 VMCA	16/27 VMCA	16/27 VMCA	16/27 VMCA	16/27 VMCA	16/27 VMCA	16/27 VMCA	16/27 VMCA
Rate	24	24	24	30	30	27	27	27	27	27	27	25	24	24	24	23	23	23

Segmentation and Notes

METCDM Notes	1	1	1	1	1	1&2	1&2	2	2	2	2	2	2	2	2	2	2	2
Segmentation	1	1	1	1	1	1	1	1	2	2	2	2	2	2	2	2	2	2

Bar Graph



BRISBANE - Nil GDP

Monday 13 May 2024

ATFM-CDM Notes

METCDM Notes:

[1] 2000-1259: A weak ridge just to the north of the area is expected to direct dry W to SW flow over the area. Light W to SSW winds possibly becoming moderate during the day. There is slight risk of light NW or NE winds during the afternoon or winds being variable at times. CAVOK conditions expected over the airport. Morning fog in far SW part of the TMA.

NCC DLM Notes:

[Nil DLM Notes]

SM Notes:

[1] 2200-0659: 19L ILS OFM 2200-0600 (NOTAM C0552/24) precluding DEP arrivals

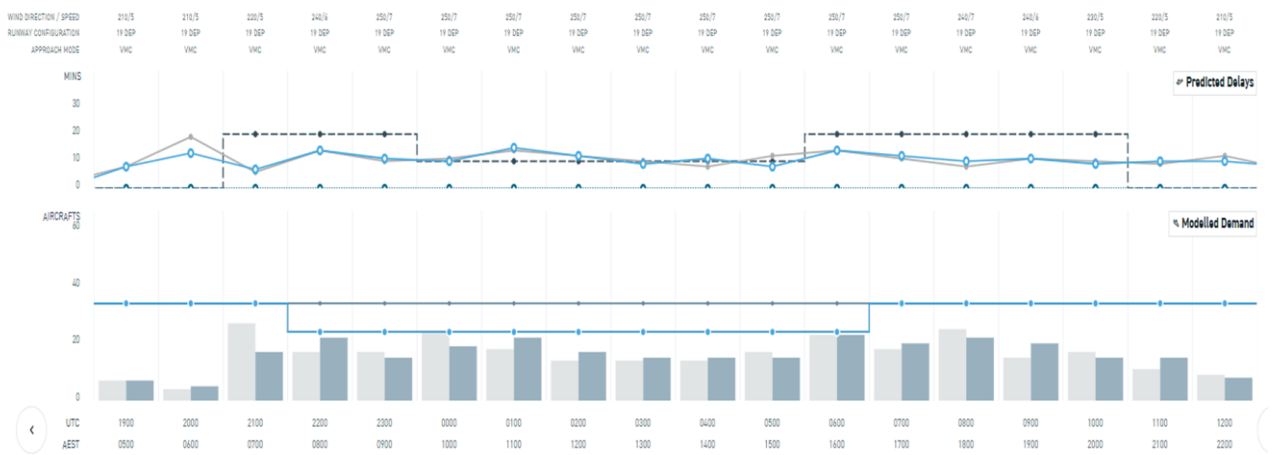
GDP Notes

ILS Runway 19L outage as per NOTAM, nil other significant network risks identified at this time.

Tabulated Data

Time (Hour UTC)	122000	122100	122200	122300	130000	130100	130200	130300	130400	130500	130600	130700	130800	130900	131000	131100	131200	
Runway Mode	19 VMC	19 VMC	19 VMC	19 VMC	19 VMC	19 VMC	19 VMC	19 VMC	19 VMC	19 VMC	19 VMC	19 VMC	19 VMC	19 VMC	19 VMC	19 VMC	19 VMC	
Rate	34	34	24	24	24	24	24	24	24	24	24	34	34	34	34	34	34	
Segmentation and Notes																		
METCDM Notes	1	1	1	1	1	1	1	1	1	1	1	1	1	1	1	1	1	0
Segmentation	1	1	1	1	1	1	1	1	2	2	2	2	2	2	2	2	2	

Bar Graph



Legend

- ERSA airborne delay threshold
- Final CDM rate
- Ground delay (average)
- Current demand
- Initial airborne delay (90th PCTL)
- Modelled demand (no GDP)
- Latest airborne delay (90th PCTL)
- Modelled demand (GDP)
- Final MET rate
- Final SM rate

PERTH

Arrivals - YPPH GDP-A 0030-0600
Departures - YPPH GDP-D 2130-0030

Monday 13 May 2024

ATFM-CDM Notes

METCDM Notes:

[1] 2200-0959: High pressure system in the Bight combined with a low pressure system just outside the NW part of the TMA will result in NE gradient flow. Moderate and gusty E'ly winds easing and tending ENE to NE during the afternoon and E to ESE during the evening. 25-30 knots E to NE winds aloft easing 20-25 knots. X-factor applied for risk of crosswinds on RWY 03 and headwinds near threshold. CAVOK. There is risk of afternoon storms outside the far northern part of the TMA which should not impact approaches in the TMA.

[2] 1000-1359: CAVOK conditions. Moderate E to ESE surface winds with aloft E to NE winds increasing to 30 knots during the evening. There is risk of winds tending 110-130 degrees during the evening and favouring operations on RWY 21 only. There is risk of evening storms outside the far northern part of the TMA which should not impact approaches in the TMA.

NCC DLM Notes:

[Nil DLM Notes]

SM Notes:

[Nil SMTM Notes]

GDP Notes

Risk of crosswinds during morning peak, nil other significant network risks identified at this time.

Tabulated Data

Time (Hour UTC)	122100	122200	122300	130000	130100	130200	130300	130400	130500	130600	130700	130800	130900	131000	131100	131200	131300	
Runway Mode		03/06 VMC	03/06 VMC	03/06 VMC	03/06 VMC	03/06 VMC	03/06 VMC	03/06 VMC	03/06 VMC	03/06 VMC	03/06 VMC	03/06 VMC	03/06 VMC	03/06 VMC	03/06 VMC	03/06 VMC	03/06 VMC	
Rate-Arrs		23	24	24	24	24	24	24	24	24	24	24	24	24	24	24	24	
Rate-Deps	40	40	40	40														
Segmentation and Notes																		
METCDM Notes		1	1	1	1	1	1	1	1	1	1	1	1	2	2	2	2	
Segmentation		1	1	1	1	1	1	2	2	2	2	2	2	2	2	2	2	

Bar Graph

